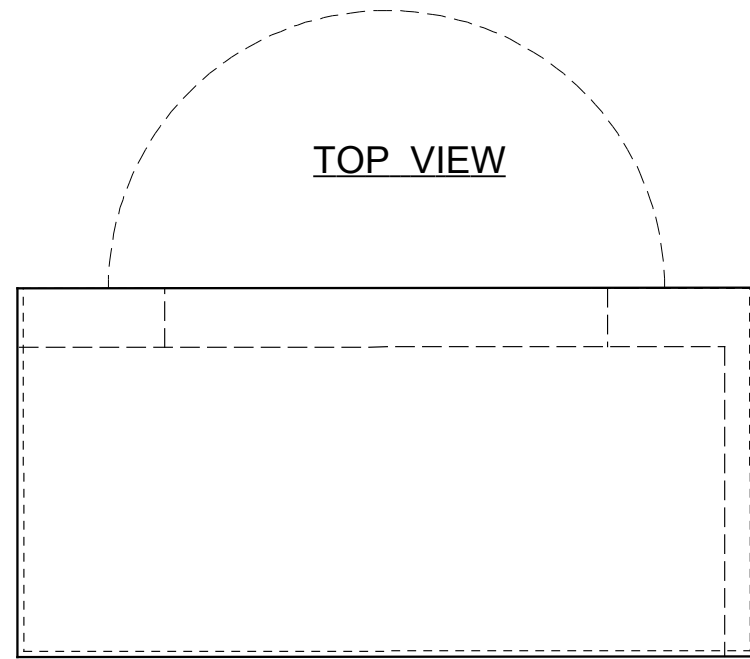
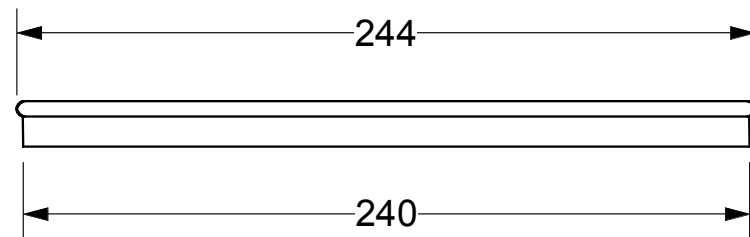


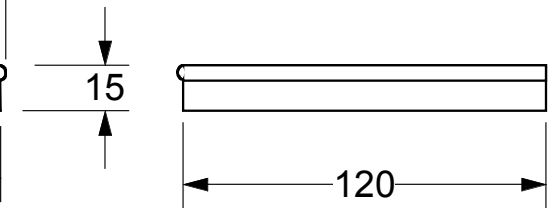
TOP VIEW



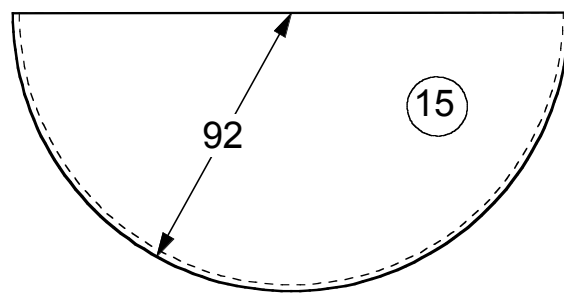
TOP VIEW



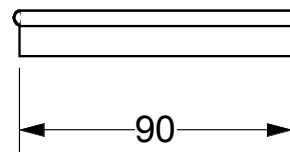
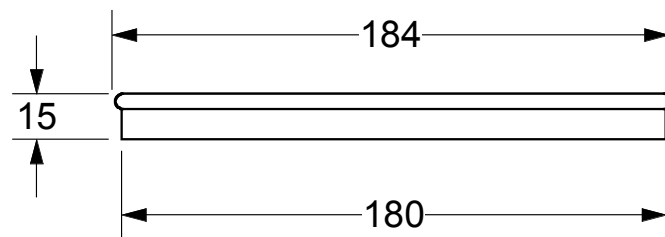
FRONT VIEW



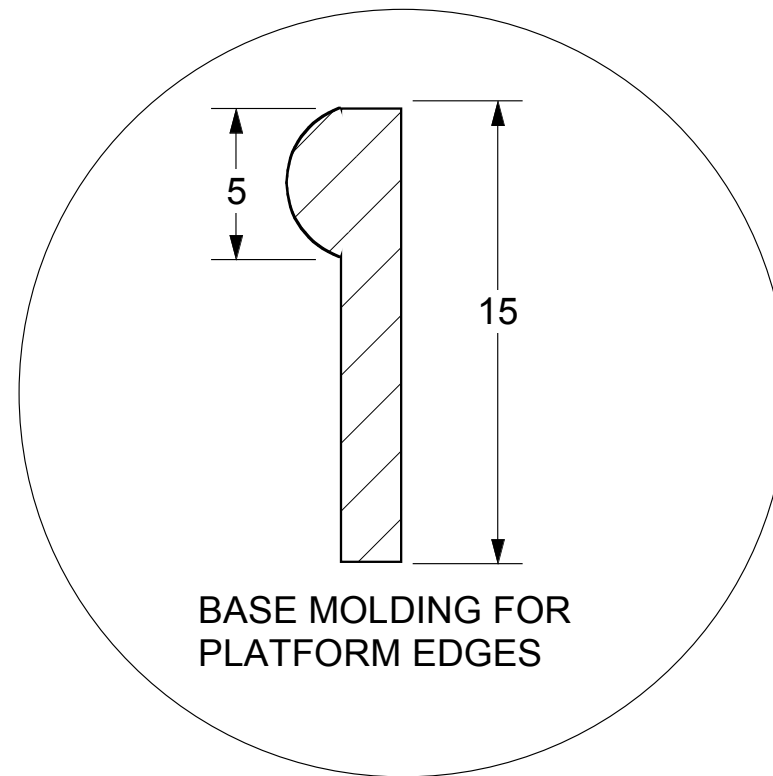
SIDE VIEW



FRONT VIEW



SIDE VIEW



BASE MOLDING FOR
PLATFORM EDGES

THE THIEF
AMERICAN UNIVERSITY IN CAIRO
DIRECTOR -- MAHMOUD EL LOZY
DESIGNER -- STANCIL CAMPBELL
TECH DIRECTOR -- DAVID WLODARSKI
DOWNSTAGE LEFT PLATFORM
JUNE 2009
SCALE: 1:25